

48v 50Ah 100Ah 200Ah lithium battery pack spec

Overview

Product Attributes

Model No.: U-P48100X-6

Supply Ability & Additional Information

Transportation: Ocean,Air

Payment Type: L/C,T/T,Paypal

Incoterm: FOB,CFR,CIF,EXW

[48V 50Ah](#) [100Ah](#) [200Ah](#) [Lithium Battery Pack](#) spec

[Lithium Battery](#) spec the important thing, active balancing has abandoned the passive balancing method of current consumption and changed to a method of transmitting current. The device responsible for charge transfer is a power converter. This device enables the small batteries in the lithium [battery pack](#) to transfer charge regardless of whether they are charged, discharged or idle, so that the small batteries can always maintain dynamic balance. Because the charge transfer efficiency of the active balancing method is extremely high, it can supply a higher balancing current, which means that this method has a stronger balance ability when charging, discharging and idle [Lithium](#) [Battery](#) [Packs](#).

Features:

- 1, High cycle life and deep cycle ability : >5000cycles @80% DOD @25degree
- 2, Intelligent monitoring :The monitoring unit checks the charging and discharging current, voltage, battery surface temperature and ambient temperature automatically.
- 3,Light weight,high energy density standby power :
- 4, safety : [LiFePO4 Batteries](#) adopt most advanced lithium ion technology , there is no risk of explosion and fire, it is designed for residential and commercial applications with absolute safety .
- 5,Intelligent [Battery Management System](#) : the battery system adopt a special BMS, Highly performance battery management module is featured with voltage ,current and temperature protection , communication between battery and the host and can be monitored from computer .

Battery Advantages :

- Using highly temperature and high cycle life materials
- Increased energy in given space
- Parallel connection available for flexible system capacity extension
- High operational reliability
- Intelligent battery management system
- Alarm function
- Maintenance free throughout lifetime
- Compatible with most of the available hybrid inverter
- Convenient for installation
- Abundant communication port
- Highly operational reliability
- real time monitoring

BMS Functions:

--Overcharge detection function
function

--Over discharge detection

--Over current detection function

--Short detection function

--Temperature detection function

--Balance function

--Communicate function RS485,RS232,CANBUS

--Alarm function

Parameter:

Model	U-P48100X
Norminal voltage	48v
Norminal capacity	100Ah
Continuously discharge working current	100A
Charge Temperature	0°C-55°C
Discharge Temperature	-20°C-60°C
Charge Cut-off Voltage	52.5V±0.2V(Floating charge voltage)

Discharge Cut-off Voltage	38V±0.2V
Dimensions	442*400*221(mm)
Weight	55Kg(APPROX)
Protocol(optional)	RS485/RS232
SOC Light	4*LED
Display Screen	LCD (optional)

Our Advantage :

1. Unique design, highly performanace
2. Ten years design life time
3. Any spectrum can be OEM/ODM, at any stage of growth.
4. Top quality material, Easy installation and maintenance.
- 5, Y15+ Professional engineer team support

Our

- Pre-sales Service
 1. Inquiry and consulting
 2. Sample support
 3. View our factory
 4. More than 95% of the timely response rate, timely response to customer questions
- After-sales Service
 1. Engineer's technical support
 2. Use online contact methods such as skype whatsapp to prvide online services to customers.

Services

About payment and shipment :

How to order: Provide your qty ,we will check the shipping fee and give you payment information.

Which payment: T/T, L/C, Paypal, 30% deposits, 70% balance to be paid before shipment

Lead time: 10-15days for samples after deposit receive , mass production depend on actual qty

Shipment Method:

1. UPS/DHL/FEDEX/TNT /EMS for samples.

2. By Air or by Sea for batch goods, for FCL and LCL.
3. Customers specifying freight forwarders or negotiable shipping methods!



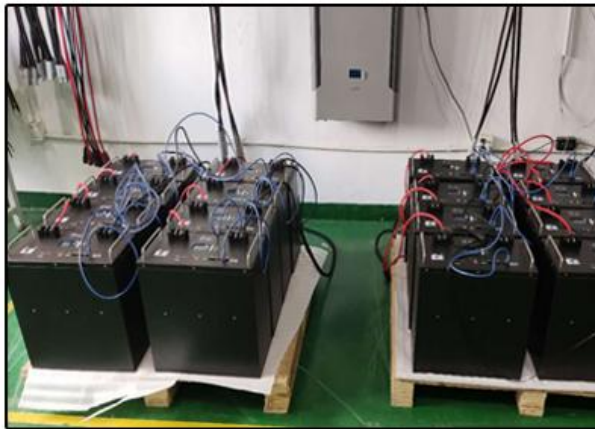


Model: B4L148
Type: LiFePO4 battery
Nominal Voltage: 48V
Capacity: 100Ah
Float Charge Voltage: 51V to 52V @25°C
Charge Current Limit: 20A
Max Discharge Current: 100A
Recommended charge voltage: 53 to 54V
Recommended cutoff voltage: 46V

OFF ON

CAPACITY 48V 100Ah

EST ADG DO RS485 CAN RS232 RS485



Product Applications



Battery Structure

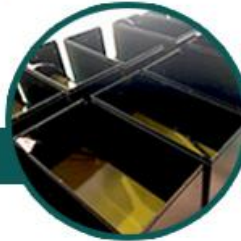
- High Quality Lithium Battery Cell



- UFO Self-developed BMS



- Metal Case with Excellent Heat Dissipation



Support Inverter Brands



Company

Profile

Not only are we engaged in the research, development, sale and service of Lithium-ion Battery, but we are proud to say our factory is ISO9001 certified.

Being a UFO POWER customer, you can be confident when purchasing from us because what behind you are our professional team, strict quality control and thoughtful customer service. Our team has been in this industry for over 10 years of lithium-ion battery experience. Our certifications like UL, UN, IEC, MSDS, CE is our commitment to quality and safety for our [Lithium Batteries](#), to ensure we comply with the industry's quality and safety standards. We are always available to discuss your requirements of batteries within 24 hours. Our know-how and expertise, incorporated

with our unparalleled customer advice and after sales support will ensure your enjoyable customer journey.